

# Joint School District No. 2

## Connecting to Wireless

(The guest network is only required for "guest" equipment. District laptops will automatically connect to the district network.)

### District Policy 1001.30:

#### Wireless Guest Network

The district wireless network is an extension of the district network and may be accessed by using the Guest user ID and password, which is generated daily by the District Service Center Information Systems. This password will be emailed to each building administrator, or designee, and it is the building administration that will control giving out the password.

By using the district wireless network the user agrees to the following:

- This wireless network will only have access to the Internet and not allow connection to any district or school server(s), printer, or other peripheral device.
- All Internet usage will be filtered and logged according to Network Filtering.
- No technical support will be provided to make a device work on the guest network.
- Personal devices connected to the wireless network may be monitored and reviewed at anytime by designated technology staff.
- Personal web accounts visited while connected to the wireless network maybe monitored and reviewed at any time by designated technology staff.

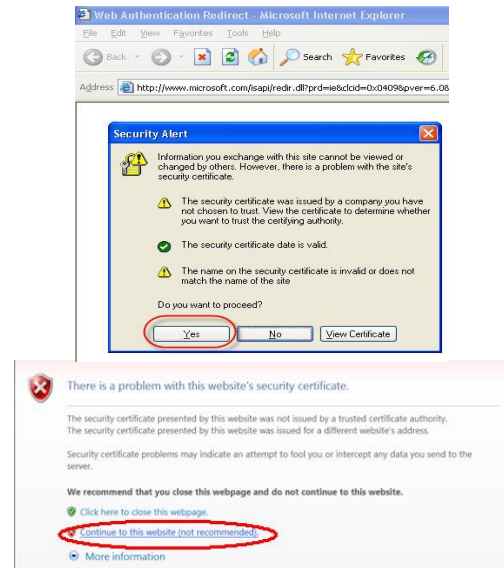
### Open Internet Explorer

**(this may or may not come up)**

- Open **Internet Explorer**
- The “Web Authentication Redirect” window will display a *Security Alert* window
- Click **Yes** or **Continue to this website**

#### Note:

These instructions are created using Internet Explorer. If using a different browser, the screens may vary.



### Login to Wireless Internet

- The *Meridian Joint School District Guest Access* Login window will be displayed
  - Username: **Guest**
  - Password: *changes daily*
- Click **Submit**

#### Note:

Username and Password are case sensitive.



## Minimize the Web Authentication Window

- The Web Authentication window will be displayed
- Minimize the Web Authentication window while working on the Internet
- When done using the Internet, click **Logout**

